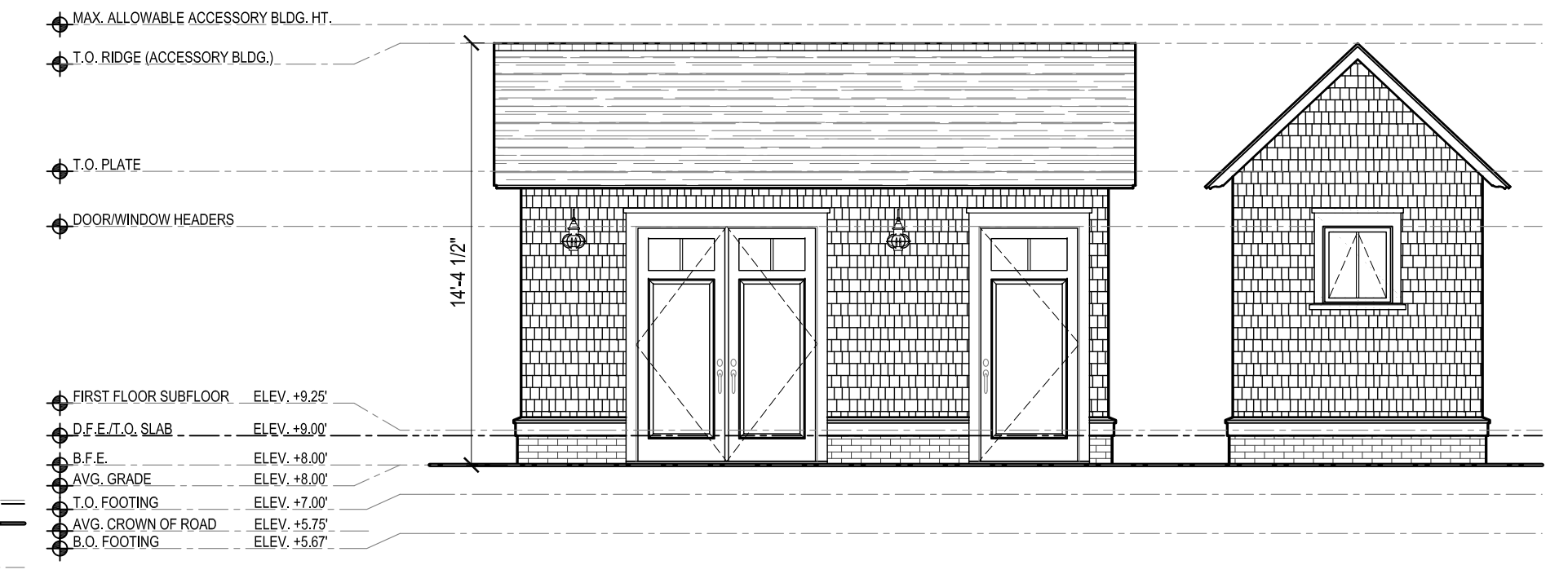


1 HOUSE WEST ELEVATION
1/8"=1'-0"

2 HOUSE SOUTH ELEVATION
1/8"=1'-0"



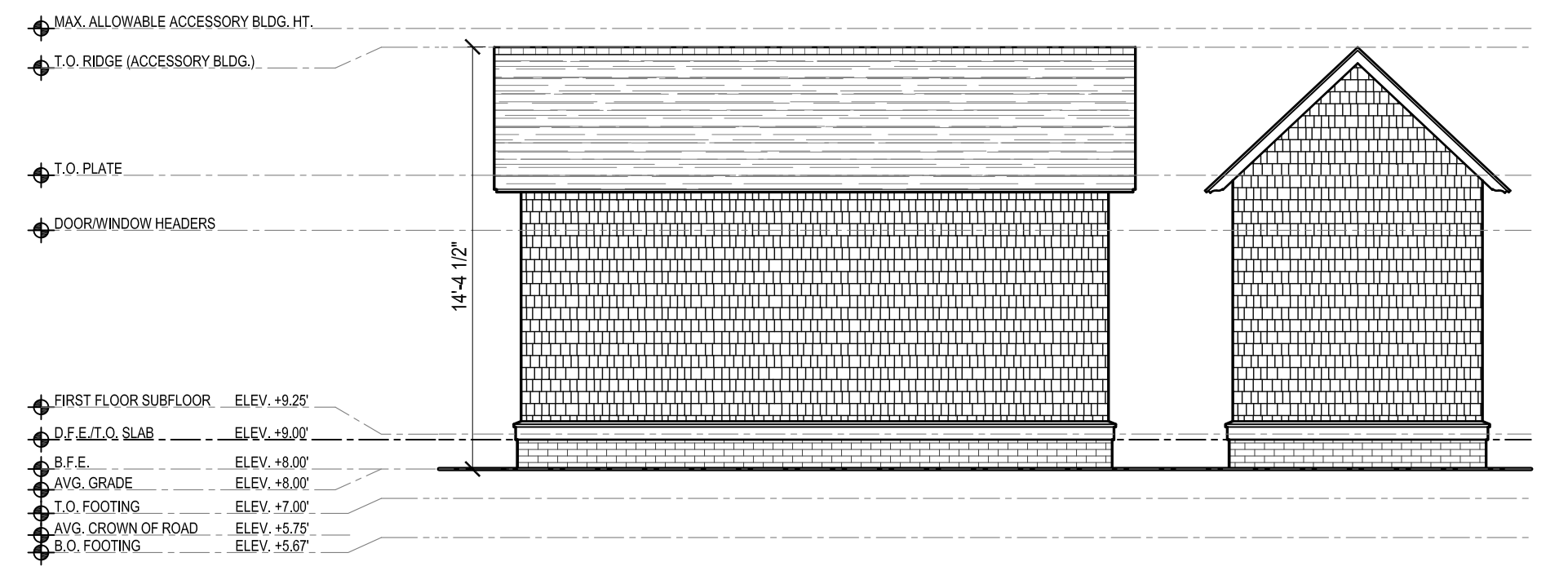
5 ACCESSORY BLDG. SOUTH ELEVATION
SCALE: 3/16" = 1'-0"

6 WEST ELEVATION
SCALE: 3/16" = 1'-0"



3 HOUSE EAST ELEVATION
1/8"=1'-0"

4 HOUSE NORTH ELEVATION
1/8"=1'-0"



7 ACCESSORY BLDG. NORTH ELEVATION
SCALE: 3/16" = 1'-0"

8 EAST ELEVATION
SCALE: 3/16" = 1'-0"