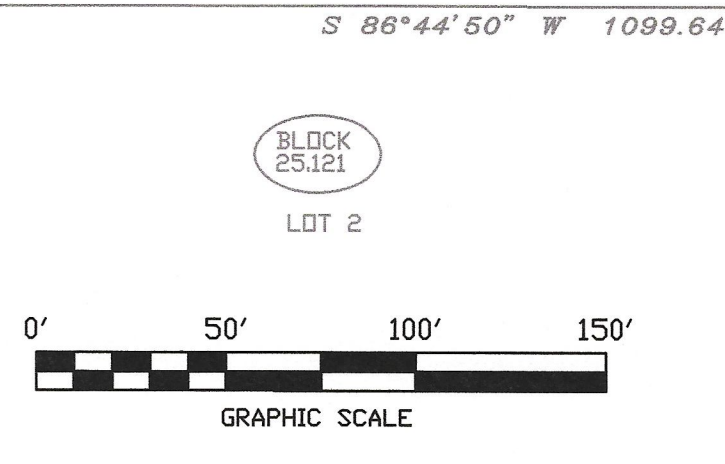


LOCATION MAP
 BARNEGAT LIGHT, NJ. USGS QUAD MAP
 SCALE: 1" = 2000'

- NOTES:**
1. A.K.A. LOTS 3.01 & 3.02 FILED MAP H-2212, FILED 8/1/1989 "FINAL PLAT MAJOR SUBDIVISION, HIGH BAR HARBOR MARINA"
 2. SOUNDINGS TAKEN WITH RESPECT TO M.L.W., REFERENCED TO TIDAL BENCHMARK 3615B.
 3. MAINTENANCE DREDGING PROPOSED WITHIN MARINA TO A DEPTH OF 6.0' BELOW M.L.W.
 4. MEAN TIDAL RANGE 1.8 FT.
 5. TOTAL VOLUME TO BE REMOVED: 1,840 C.Y.
 6. TOTAL AREA TO BE DREDGED: 43,470 S.F. (1.18 AC.)
 7. DREDGING IS TO BE CONDUCTED BY CLOSED CLAM SHELL BUCKET.
 8. SEDIMENT CURTAINS WILL BE USED AROUND THE DREDGE AREAS.
 9. PROPOSED DEWATERING AREA ON THE PAVED PARKING LOT, INCLUDING HAY BALES SURROUNDING IT (SEE DETAIL).
 10. PILING OF THE WAVE ATTENUATOR TO BE REMOVED WILL BE PULLED OUT.
 11. MAINTENANCE DREDGING SHALL BE APPROXIMATELY 900 CY ONCE EVERY FIVE YEARS.



TIDAL INFORMATION		
TIDAL REFERENCE DATUM:	MEAN LOW WATER	NAVD 88
MEAN HIGHER HIGH WATER (MHHW)	2.32	1.29
MEAN HIGH WATER (MHW)	2.09	1.06
NORTH AMERICAN VERTICAL DATUM 1988 (NAVD 88)	1.02	0.00
MEAN TIDE LEVEL (MTL)	1.03	0.00
MEAN LOW WATER (MLW)	0.00	-1.02
MEAN LOWER LOW WATER (MLLW)	-0.12	-1.14
NATIONAL GEODETIC VERTICAL DATUM 1929 (NGVD 29)	-0.30	-1.32

TIDAL INFORMATION IS BASED INFORMATION OBTAINED FROM NATIONAL OCEANIC & ATMOSPHERIC ADMINISTRATION (NOAA) VDUTUM DATUM TRANSFORMATION PROGRAM, VERSION 4.2.

- GENERAL NOTES:**
1. THE SPOT ELEVATION INFORMATION DEPICTED ON THIS MAP REPRESENT THE RESULTS OF FIELD WORK PERFORMED BY RIOUX ENGINEERING L.L.C. ON JULY 24, 2021.
 2. HORIZONTAL COORDINATES SHOWN HEREON ARE BASED ON NEW JERSEY STATE PLANE COORDINATES, NORTH AMERICAN DATUM OF 1983 (NAD83).
 3. VERTICAL ELEVATIONS SHOWN HEREON ARE BASED ON NORTH AMERICAN VERTICAL DATUM 1988 (NAVD88).
 4. COORDINATES ARE REFERENCED TO FEDERAL BASE NETWORK CONTROL STATION, BENCHMARK DESIGNATION "LOVELADIES AZ MK", PID JU0171.
 5. BASE MAP INFORMATION IS AS SHOWN ON THE PLAN TITLED "MAP TO ACCOMPANY WATERFRONT DEVELOPMENT APPLICATION, LOTS 3.01 & 3.02, BLOCK 25.12" AS PREPARED BY HORN, TYSON & YODER, INC.

RIOX ENGINEERING LLC
 Engineers & Consultants
 DATE: 10/12/21
FRANK J. BARLOWSKI, P.L.S.
 NJ PROFESSIONAL LAND SURVEYOR Lic. No. 24G803973500
 13 Dayton Avenue, Toms River, New Jersey 08753
 Tel: 908-295-6607 Fax: 732-818-0646
 Certificate of Authorization No. 24GA28231000 WWW.RIOUXENGINEERING.COM

Date: 09/27/21	Scale: (H) 1"=1' (V) Vert. Scale	Drawn: TJR	Designed: TJR	Checked: [Initials]	Released: [Initials]
----------------	----------------------------------	------------	---------------	---------------------	----------------------

1.	10/12/21	CORRECTED BLOCK NUMBER	TJR	FB	TJR
NO.	DATE	REVISION	DRAWN	CHK'D	REL'D

HIGH BAR HARBOR YACHT CLUB
 LOTS 3.01 & 3.02, BLOCK 25.12
 35 SUNSET BOULEVARD
 BULKHEAD ELEVATIONS

SITUATED IN
 LONG BEACH TOWNSHIP, OCEAN COUNTY, NEW JERSEY

Job No. 0015000101	Drawer Number 0015000101	Drawing Name: 2021-10-12 Rev 2, Bulkhead Elevations	1 OF 1
--------------------	--------------------------	---	--------

PLAN: 10/12/21, 3:17 PM, Rev. 02
 File: P:\Projects\2021 - High Bar Harbor Yacht Club\2021-10-12 Rev 2_Bulkhead Elevations.dwg --01 -- ELEVATION SURVEY
 Copyright Rioux Engineering, LLC, 2021