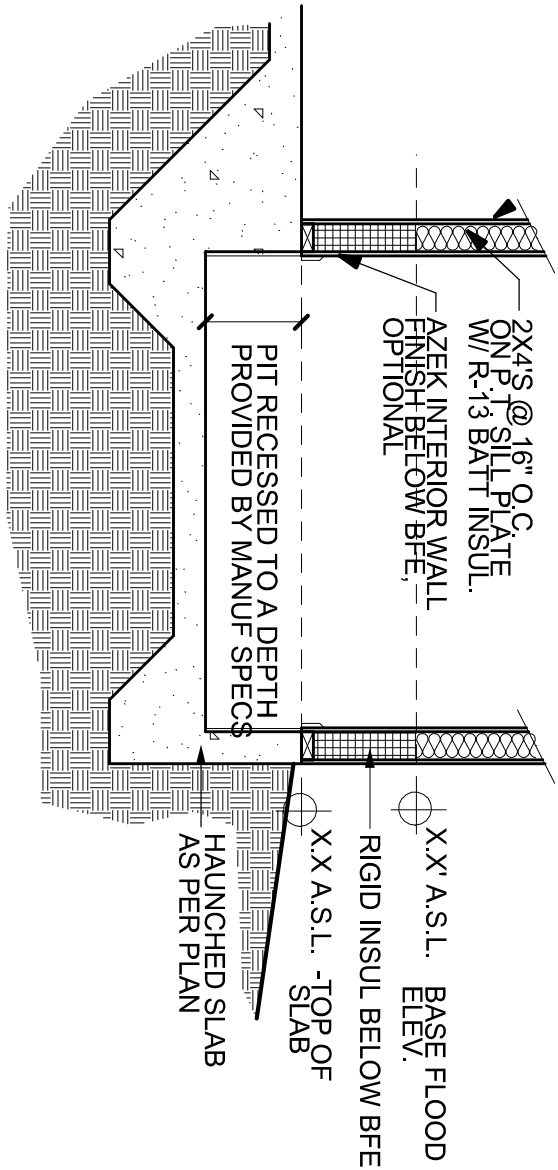
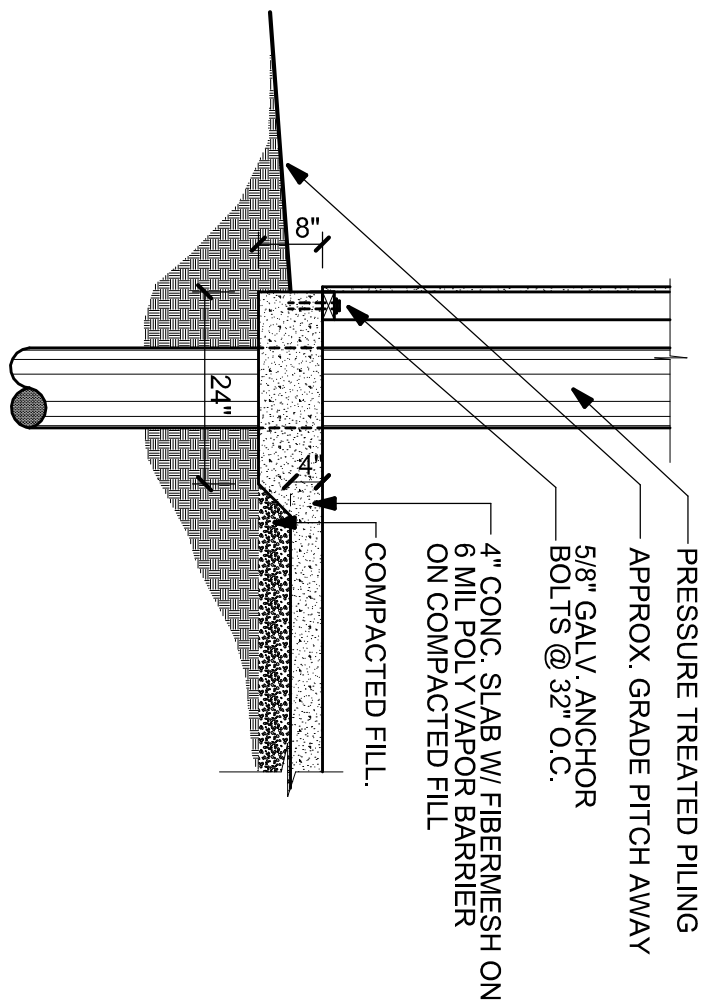


MATERIALS BELOW BASE FLOOD

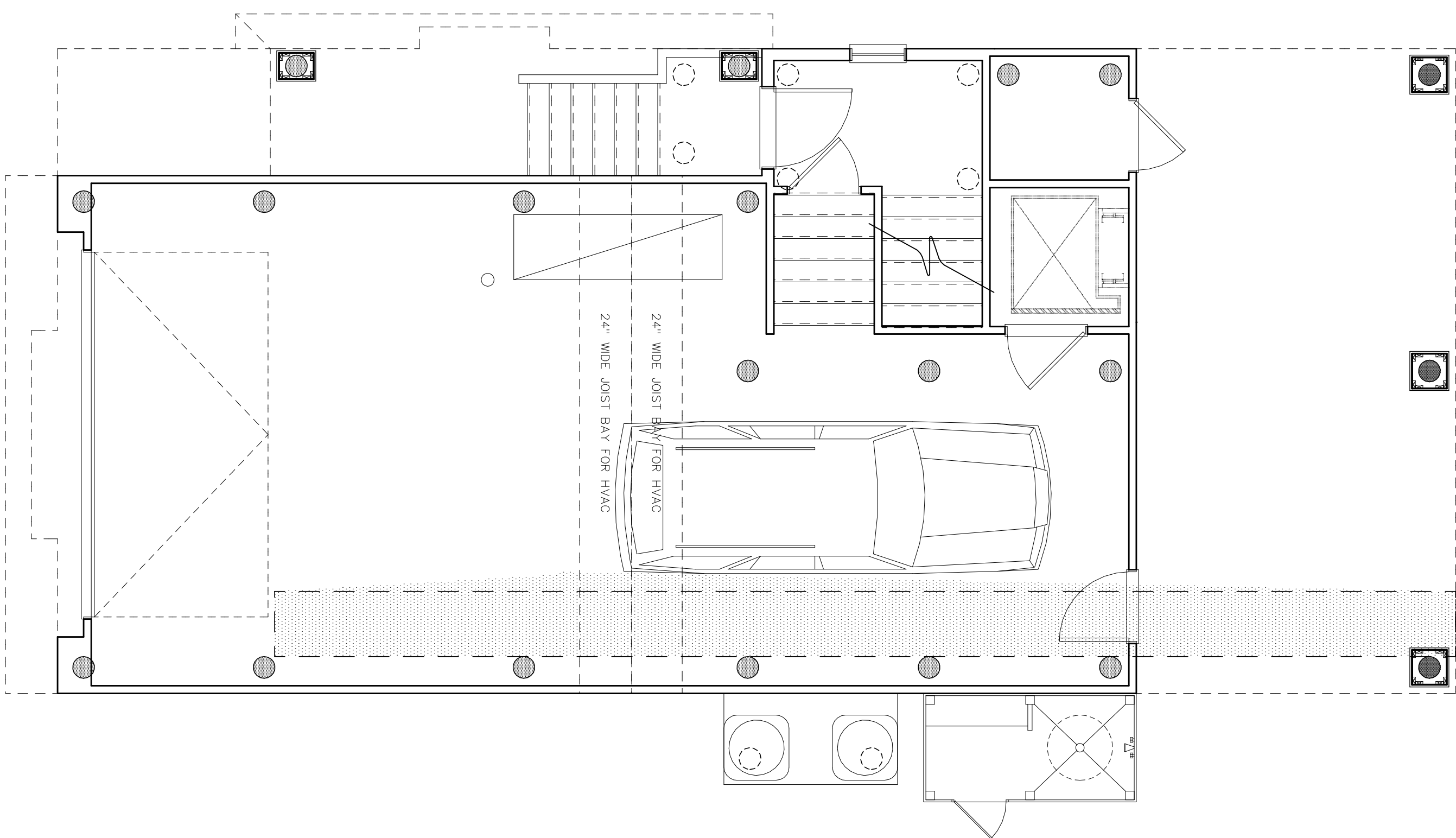
ALL MATERIALS AT GROUND FLOOR WALLS AND FLOORS TO PER FEMA TECHNICAL BULLETIN 21008 15'0" TYPE 'X' GYP BOARD WHERE REQUIRED FOR FIRE RATING AT ELEVATOR AND STAIR ALL GROUND FLOOR DOORS TO BE METAL. A/CQ PT STUDS @ 16" OC @ ALL GROUND FLOOR WALLS. 1/2" MIN. EXTERIOR WALL AREAS 3/8" PAINTED CEMENT BOARD @ INTERIOR WHERE BELOW B.F.E. ALL MECHANICAL EQUIPMENT, DUCTS, WIRING, ETC. MUST BE ABOVE B.F.E. INSUL. TO BE RIGID FOAM WHERE BELOW B.F.E



2 ELEVATOR PIT DETAIL
SCALE: NTS



1 SLAB DETAIL
SCALE: NTS



2 Ground Floor Plan
A1 SCALE: 1/4" = 1'-0"