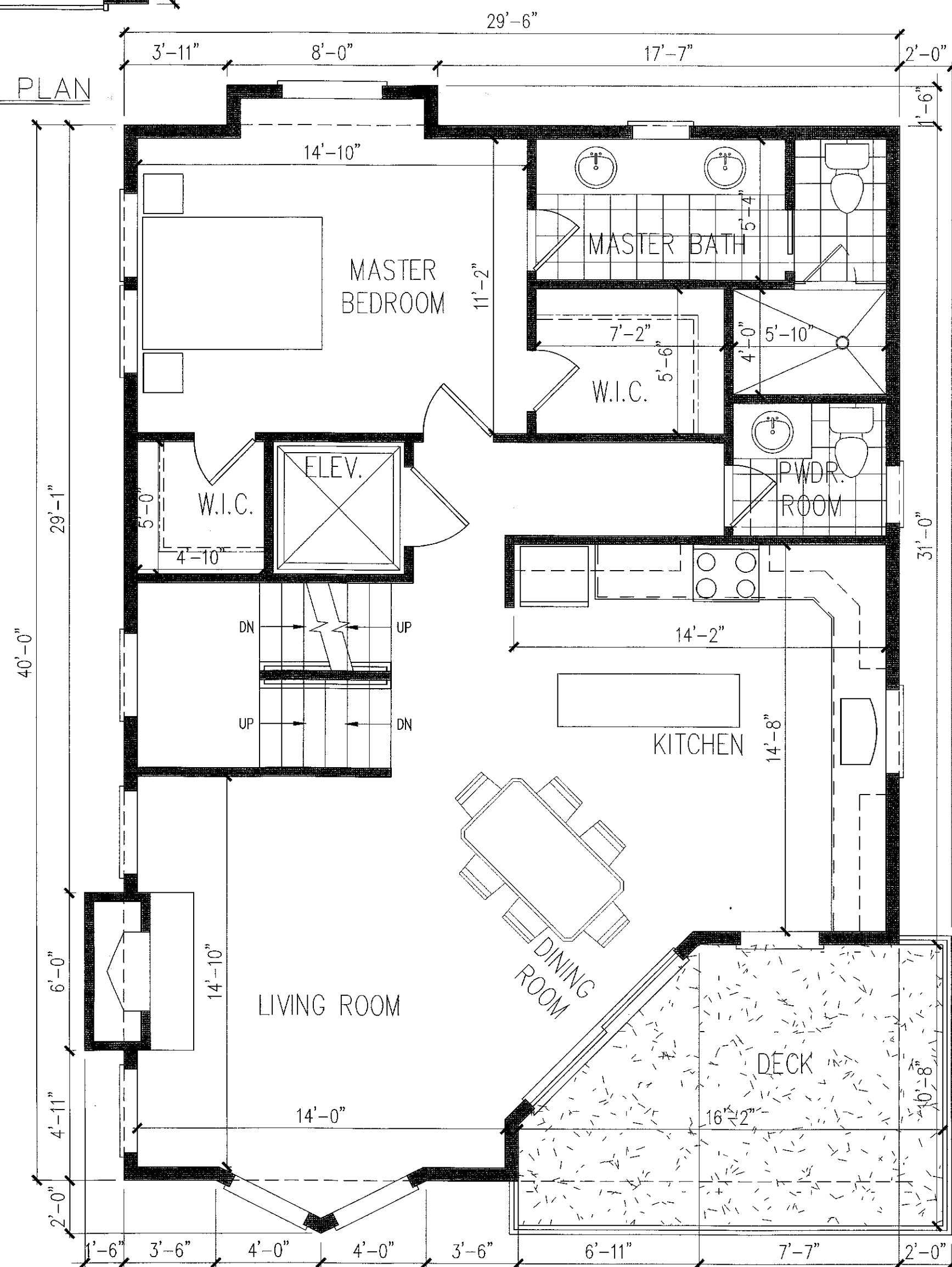
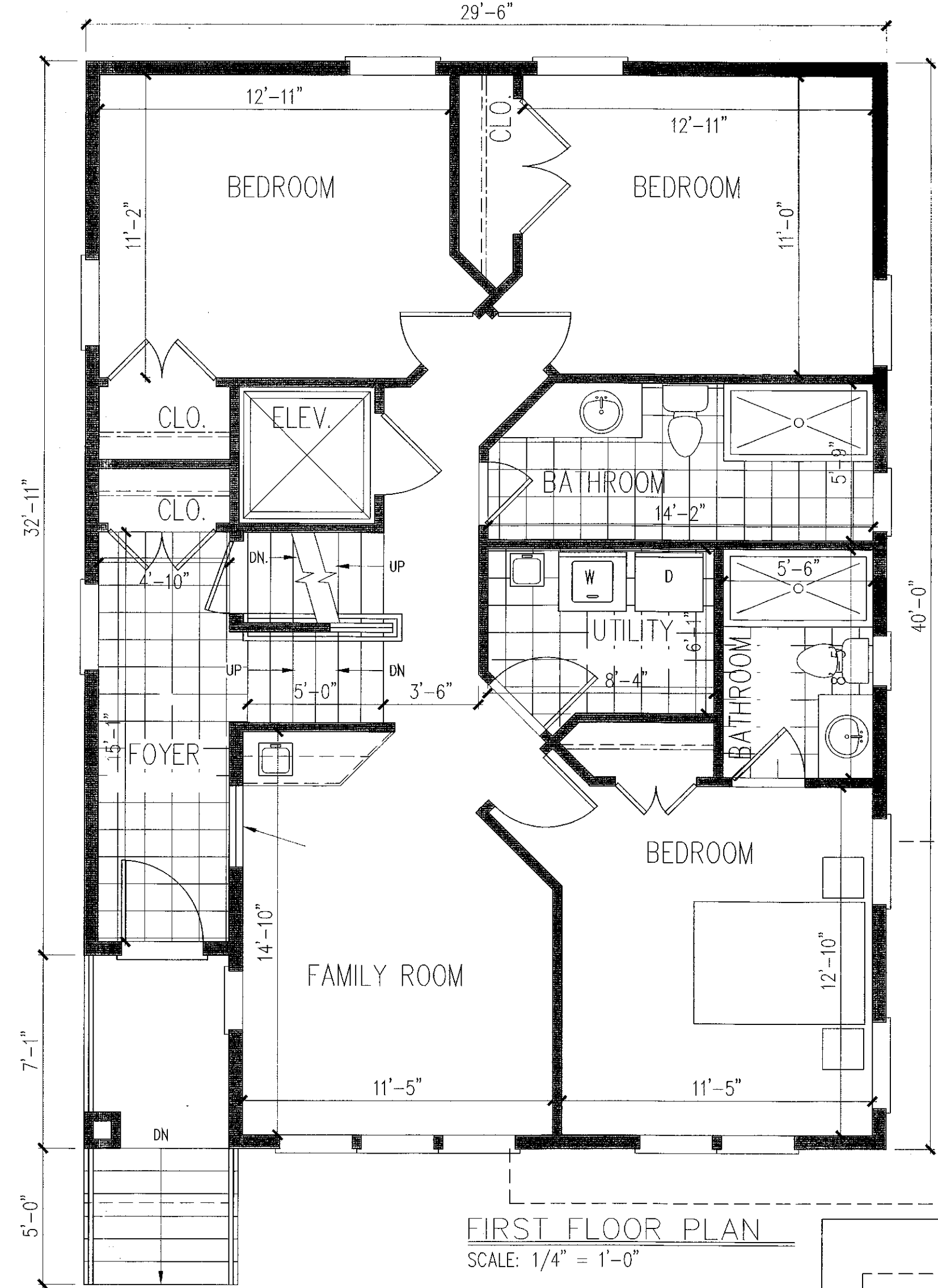


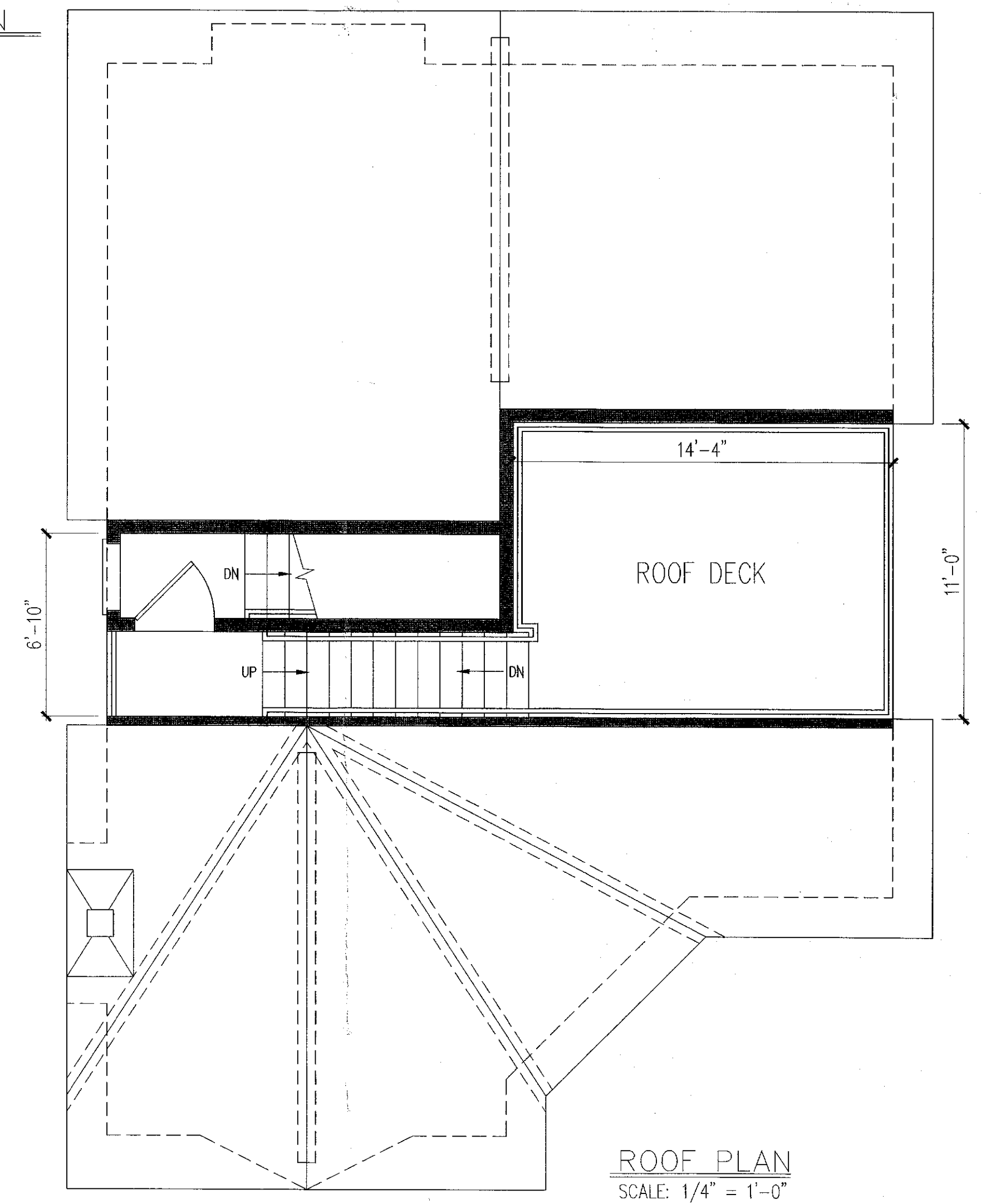
GROUND FLOOR PLAN  
SCALE: 1/4" = 1'-0"



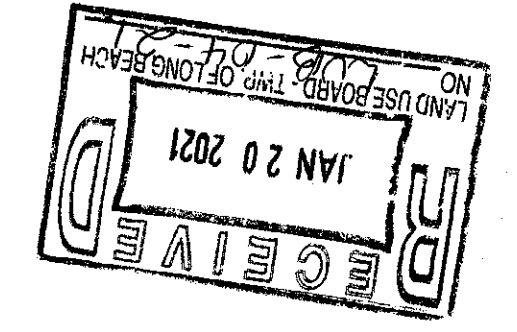
SECOND FLOOR PLAN  
SCALE: 1/4" = 1'-0"



FIRST FLOOR PLAN  
SCALE: 1/4" = 1'-0"



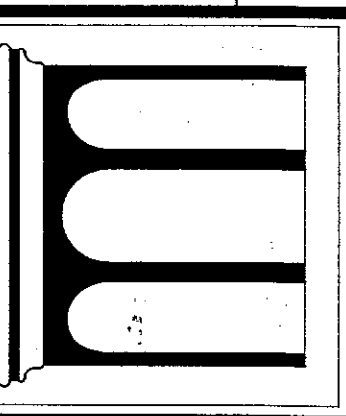
ROOF PLAN  
SCALE: 1/4" = 1'-0"



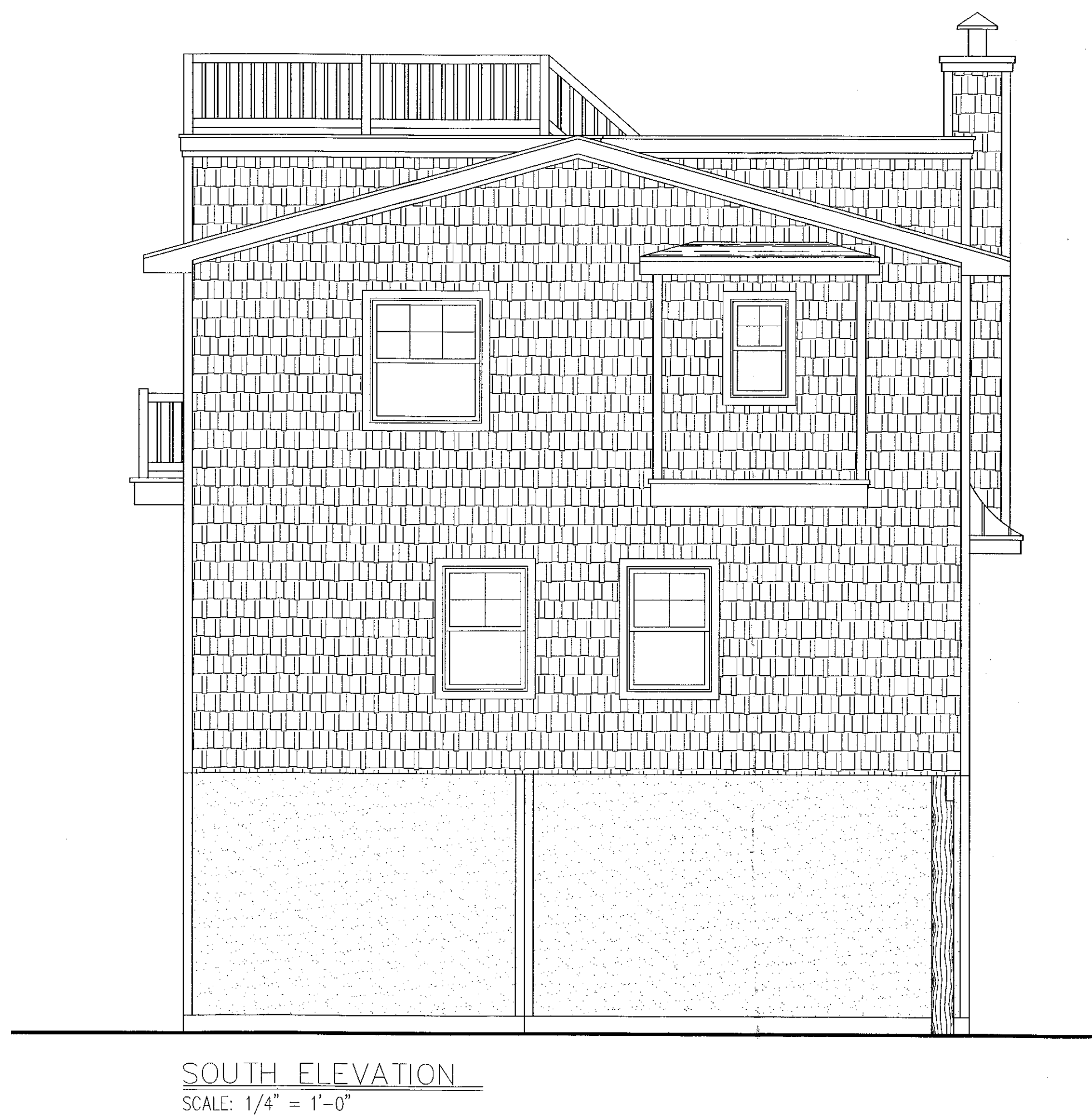
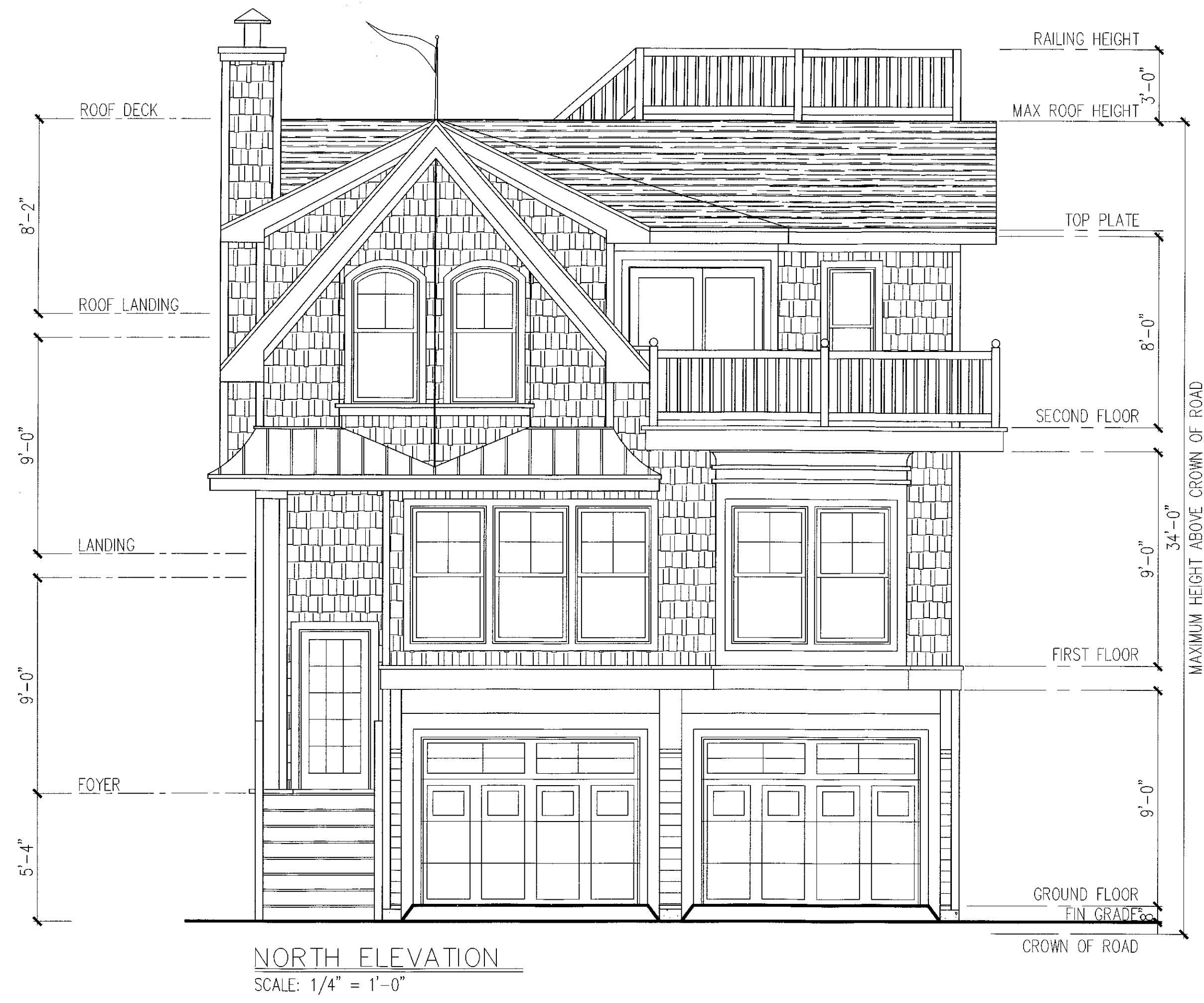
PLANS	DRAWN BY: GM
SCALE: AS NOTED	APPROVED BY:
DATE: 1/19/21	CHECKED BY:
REVISION:	DRAWING NUMBER: A-1

PROPOSED SING. FAMILY RESIDENCES  
LOT 13 BLOCK 4.07  
LONG BEACH TOWNSHIP  
OCEAN COUNTY, NEW JERSEY  
APPLICANT: ELM H. HOLDINGS, LLC

VIDA A. GARFIN  
ARCHITECT  
NJ REG. # 15796



STUDIO  
**TAGLAND**  
DESIGNS LLC  
3 WEST DELAWARE, BEACH HAVEN TERRACE, NJ 08008 (609) 361-8128  
WWW.STUDIOTAGLANDDESIGNS.COM  
NEW JERSEY STATE BOARD OF ARCHITECTS REGISTRATION NUMBER: AC-657



**ELEVATIONS**

**PROPOSED SING. FAMILY RESIDENCES**  
**LOT 13 BLOCK 4.07**  
**LONG BEACH TOWNSHIP**  
**OCEAN COUNTY, NEW JERSEY**  
APPLICANT: ELMH. HOLDINGS, LLC

**DAVID A. GAFFIN**  
ARCHITECT

**STUDIO TAGLAND**  
DESIGNS LLC

3 WEST DELAWARE, BEACH HAVEN TERRACE, NJ 08008 (609) 361-8128  
 WWW.STUDIOTAGLANDDESIGNS.COM  
 NEW JERSEY STATE BOARD OF ARCHITECTS AUTHORIZATION NUMBER: AC-297

<small>SCALE: AS NOTED</small>	<small>APPROVED BY</small>
<small>DATE: 1/19/21</small>	<small>CHECKED BY</small>
<small>REVISION:</small>	<small>DRAWING NUMBER</small>
<small>REVISION:</small>	<small>A-2</small>